

Heathcote dementia-friendly village

1 What is dementia?

Dementia describes a collection of symptoms that are caused by disorders affecting the brain. It is not one specific disease.

Dementia affects thinking, behaviour and the ability to perform everyday tasks. Brain function is affected enough to interfere with the person's normal social or working life.

Alzheimer's disease and Parkinson's disease are two of the most common forms of dementia.

Most people who develop dementia are over the age of 65 but it is not a normal part of ageing.

People in their 30's, 40's and 50's can also develop dementia. This is known as younger onset dementia.

2 Key dementia facts and statistics for Australia

(updated February 2017)

There are more than 413,000 people currently living with dementia.

Without a medical breakthrough, the number of people living with dementia is expected to increase to more than 536,000 by 2025 and 1.1 million by 2056.

Currently 244 people are joining the population with dementia each day. By 2025 this is expected to increase to 318 people each day and to 650 people each day by 2056.

There are an estimated 25,938

Australians with younger onset dementia. This is expected to rise to 29,375 by 2025 and 42,252 by 2056.

Dementia is currently the single greatest cause of disability in older people (aged 65 years or older).

Dementia is now the second leading cause of death each year. It contributes to 5.4% of all deaths in males and 10.6% of all deaths in females.

*Alzheimer's Australia –
www.fightdementia.org.au*

3 What are dementia-friendly villages?

In comparison to traditional residential care settings, dementia-friendly villages greatly improve the quality of life for people living with dementia, their families and other

carers. They encourage people living with dementia to continue to live their lives to their full potential and do not cause needless disability.

4 The Hogeweyk example

Hogeweyk was the world's first dementia-friendly village. It is located in Weesp in the Netherlands and its motto is "living a lifestyle, just like before". The main consideration in Hogeweyk's development was how a secure residential care facility could best support and encourage all residents to remain physically, mentally and socially active.

Inside its walls Hogeweyk mimics

Dutch neighbourhood life. It includes clusters of homes, community facilities, public spaces and shops. Residents are assisted to participate in daily life activities (e.g. doing the grocery shopping or gardening, going to the hairdresser or library, playing bowls) by a complementary care model.

*hogeweyk.dementiavillage.com/en/
stedenbouw/*

5 Why develop a Heathcote dementia-friendly village?

The development of Heathcote dementia-friendly village is identified as a community priority within the Heathcote and District Community Plan. The reasons for this include:

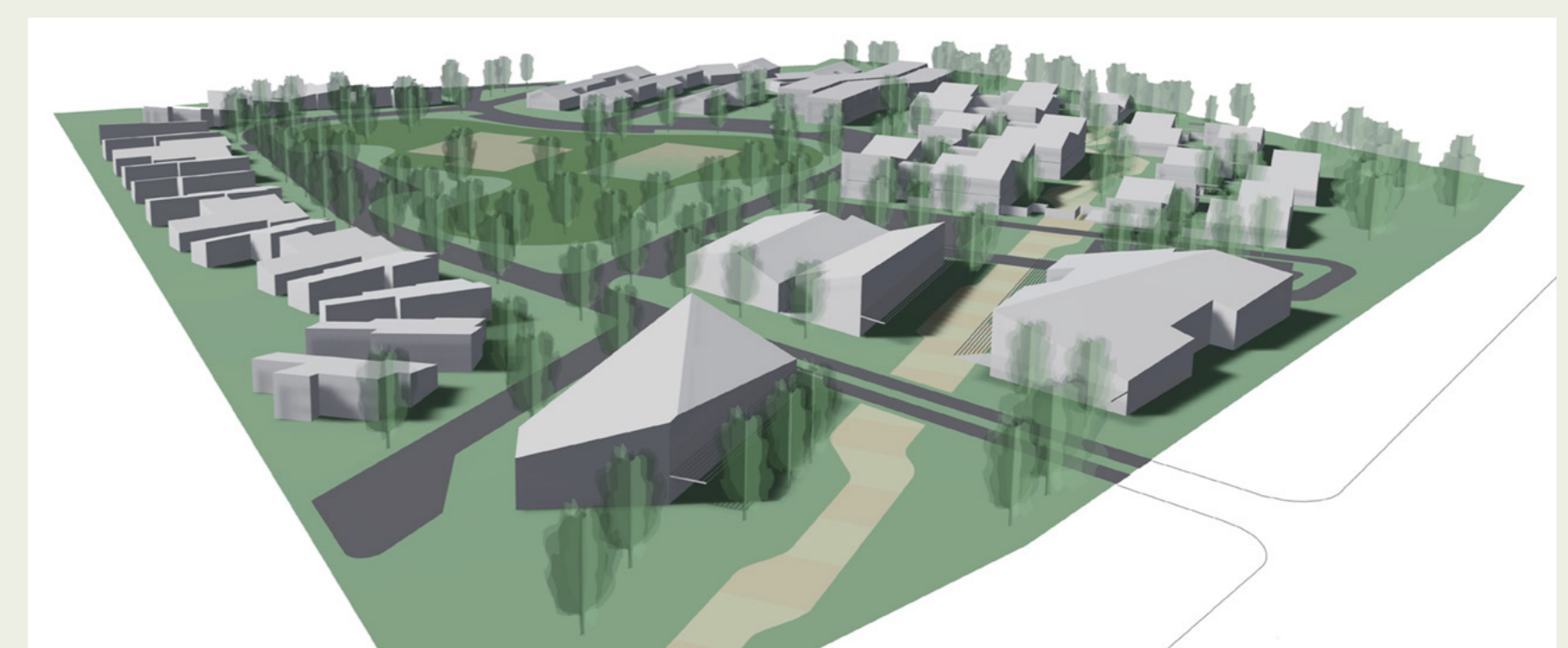
- our community's care providers (such as the hospital) are finding it increasingly difficult to manage severe dementia behaviours within traditional residential care settings.
- there are no other care options currently available locally (or even within Australia).
- our community would benefit from new economic drivers, as well as new training and employment opportunities. (It is estimated a dementia-friendly village would inject \$15M into our local economy each year).

- this would be the first village of its type in Australia and would establish Heathcote and Central Victoria as a centre of dementia care best practice and learning.

With dementia prevalence predicted to grow to epidemic proportions, our community would like to become leaders in dementia care... for the benefit of people living with dementia, their families, their carers and our community as a whole.

The Heathcote dementia-friendly village concept is similar to Hogeweyk village but would also incorporate the 'Green Care Program'. This program links healthcare to agriculture, gardening, landscaping and nature conservation, caring for animals and community activities.

6 Heathcote dementia-friendly village concept designs (examples only)



7 The next steps

A Project Steering Group – including some people from Heathcote – has been established to oversee the project's progress.

To attract the significant investment required (estimated at \$70M - \$85M) to make the development of a Heathcote dementia-friendly village a reality, we first need to do a feasibility study to prove the business case. That is, we need to demonstrate that the benefits and outcomes the facility will offer will justify the cost to develop and operate it. We will need the assistance of people with feasibility study expertise to achieve this, and we will need to pay them for their expertise.

The Project Steering Group will be launching a fundraising campaign soon to assist with the feasibility study costs. It is hoped that government agencies, corporate entities, members of the public, Heathcote businesses and community members will all get behind the fundraising campaign for this exciting project. Please consider if you are able to contribute.

If you would like to know more about this project, please contact:

Dan Douglass, Project Steering Group Chair
email ddouglass@heathcotehealth.org or phone 5431 0900